



Path of Leadership

President Qualifications

- Must have served or be serving at least 3 years on the board at the time of application.
- Must have served in a Chair role at least once.

Board Progression

- Chair must have served, ideally, as a Co-Chair, but could also have served as a committee member before becoming Chair.
- See diagram

Selection Process

- Candidates submit their applications via online form
- Presentations will take place prior to the November board meeting.
- Candidates will present a 15 minute plan for their presiding year to the selection committee
 - The selection committee will comprise of:
 - President
 - Incoming President
 - Sameera Lowe, Executive Director
 - 4 most recent past Presidents
- A recommendation for the incoming President-elect will be put before the board for approval.
- The successful candidate will be appointed as President-elect, and will begin that role in May of the following year.
- They will serve in the role for one year before assuming the role of Chapter President.

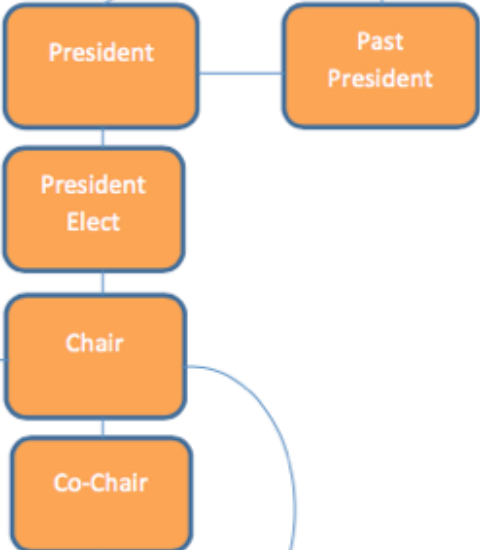
GLOBAL



REGIONAL



CHAPTER BOARD



CHAPTER MEMBER

